

# Why Salons Choose HAIR•B•TWEENZ™

INSTANT HAIR INTEGRATION FILLERS



Snap comb clips work easy and are very secure. (Bend clip in or out to open and close)

**Pull-thru pieces that blend in with your own hair!**



➤ **Revolutionary new concept allows own hair to flow through wefts of hair undetectably!**



➤ **Thin delicate texture matches client's own fine hair naturally; Does not hide or cover own hair!**

It is a proven fact that women with thinning hair prefer to purchase their hair necessities directly from their salon!



Featuring HBT-4x6H

**How many of your clients could use some extra hair?**

**ADD VOLUME!**  
**ADD HIGHLIGHTS!**

©2004 Look of Love International. All Rights Reserved

*Look of Love*®  
INTERNATIONAL

**Pull through pieces that blend in with your own hair!**



Featuring HBT-Elite-6H

before

Most all natural hair colors in stock!

*Look of Love*®  
INTERNATIONAL  
555A North Michigan Avenue • Kenilworth, NJ 07033  
Toll-Free: 1•800•526•7627 Fax: 908•687•9509  
[www.lookoflove.com](http://www.lookoflove.com)

Human hair is not available in tipped colors.

**Hair•B•Tweenz™**  
Instant Hair Integration Fillers

# Hair•B•Tweenz™ by Look of Love® INTERNATIONAL

## INSTANT HAIR INTEGRATION FILLERS



**SMALLER SIZES FOR  
ADDED VOLUME IN  
TOP/CROWN AREAS**

Whether using 1 or 2, once attached, the HBT blends in with your own hair, adding new volume and style!  
**shown is HBT-4x4 and HBT-6x4.5**

### Helpful Hints...

- **Setting & Re-Curling**  
Hot irons can be used to re-curl 100% Human Hair pieces *ONLY*. Fiber pieces can be set in rollers, rinsed with hot water, followed with cold water rinse and allowed to air dry.
- **Thinning/re-shaping hair lengths**  
It is best to always cut when hair is wet. Using a styling razor or thinning scissor until desired density and hair length is achieved.
- **Perfect Styling Effects**  
The Elite Human pieces can be combed (while wet) in desired root direction to match clients style; allowed to air dry, then finished with curling iron.
- **Color Enhancements**  
The best is a mousse type of color rinse. *Do not use peroxide colors on Human Hair*

### **BIGGER SIZES FOR LARGER COVERAGE AT TOP**

Can be attached vertically or horizontally to suit intended styling direction.



**shown is HBT-XTRA or  
HBT-ELITE-XTRA-8H**

### **FOR LENGTH & FULLNESS AT NAPE**



Choosing the right hair length HBT for nape attachment can enhance or change your overall hairstyle. Best choices  
**HBT-6x8 or HBT-6x8H & HBT-6x4.5**

**\* FOR LONGER HAIR LENGTHS see our  
HBT "Temple-to-Temple" Brochure**

## Choose The Right Enhancement For Your Hair!



### **HBT-4x4 Mini Spot Filler**

Light & easy to use. Adds a touch of extra hair in thin spots. Comes pre-curved with 4" hair lengths on elastic wefts. 4" wide base and 2 snap comb clips. FiberBlend. Ideal for frontal, top crown area.



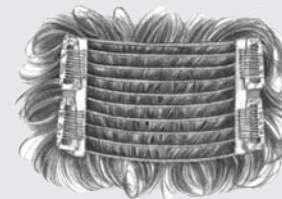
### **HBT-4x6H 100% Human Hair Filler**

Offers versatile styling options with 6" hair length; can be trimmed, curled with irons, rinsed, etc. 4" wide pull-thru base with 2 snap comb clips. Also makes great bangs if attached facing forwards.



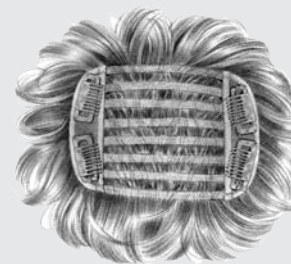
### **HBT-ELITE-6H 100% Human Hair Filler**

The Professionals Choice! 100% hand tied for multi-directional styling. Pull-thru elastic bands with 6" hair length, 4.5" base width. Fuller and thicker than HBT-4x6H. Can be curled with irons.



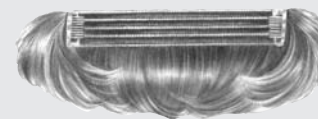
### **HBT-XTRA Extra Coverage Filler**

Great integration unit for those with large areas of thinness at top. Pull-thru base is 5" x 4" with 4 snap comb clips. FiberBlend, (pre-curved) 5" hair lengths on elastic wefts. Can be attached vertically or horizontally.



### **HBT-ELITE-XTRA-8H 100% Human Hair Filler**

Extra coverage for larger areas of thinness. Hand tied for Multi-directional styling. Pull-thru Base is 5" x 4 1/2" with 4 clips, 8" hair length. Can be cut or thinned; use hot irons to re-curl. Full enough to use without pulling own hair through base.



### **HBT-6x4.5 Wide Coverage Filler**

Pull-thru Base is 6" with 2 clips, 4 1/2" hair length. FiberBlend/ Pre-curved on elastic wefts. Perfect for back crown or nape. Excellent for larger head sizes.



### **HBT-6x8 or HBT-6x8H FiberBlend or 100% Human Hair**

The 6" wide base has 2 snap comb clips. Both feature 8" hair lengths. Ideal for adding volume or length at the back or nape areas.